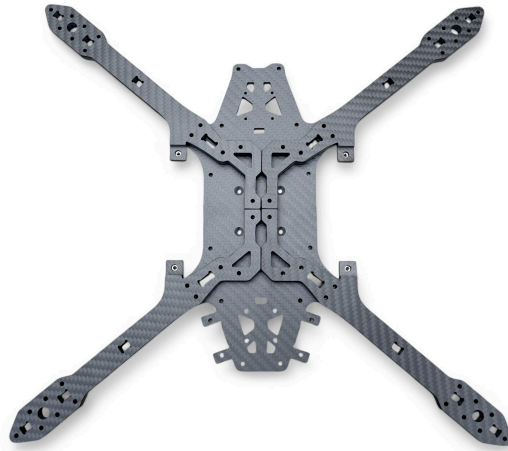
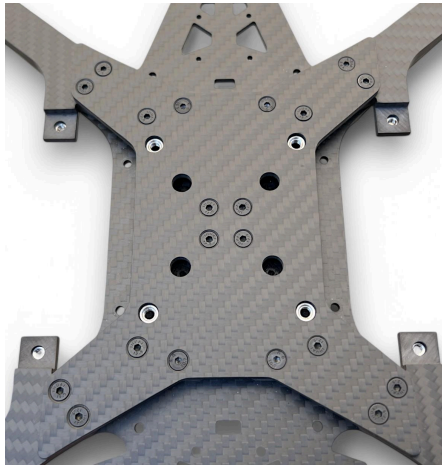


HYPERLOW X8 FRAME ASSEMBLY

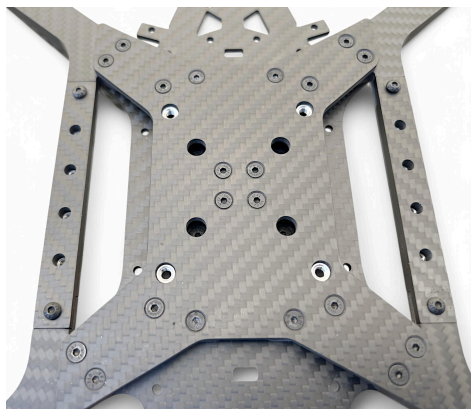
1. Arrange arms as shown on top plate with pressnuts faced down



2. Sandwich with brace plate using 5 x 14mm flathead bolts per arm.



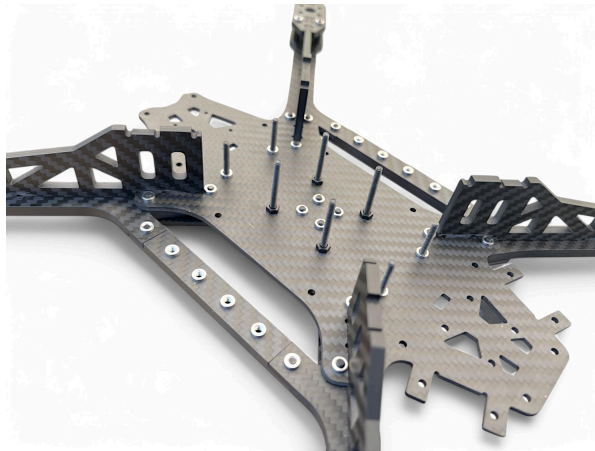
3. Attach side braces with 4 x 8mm button heads



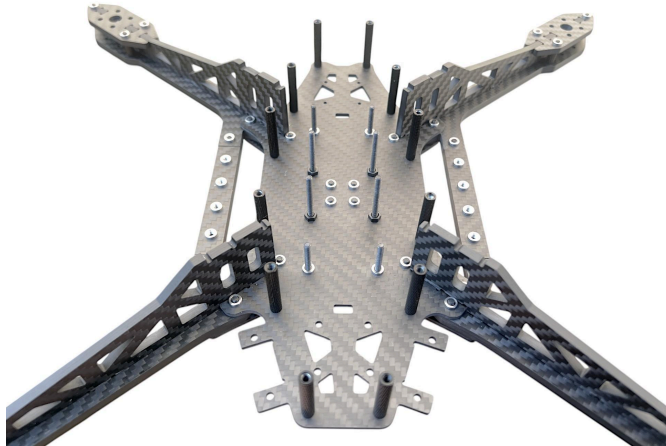
4. Slot in arm braces (insert perpendicular for ease of fit) and secure with motor mounts and 3 x 22mm button heads going through 10mm standoffs.



5. Install 4 x 35mm stack bolts with metal nuts.
See MODS section for overlapping stack options



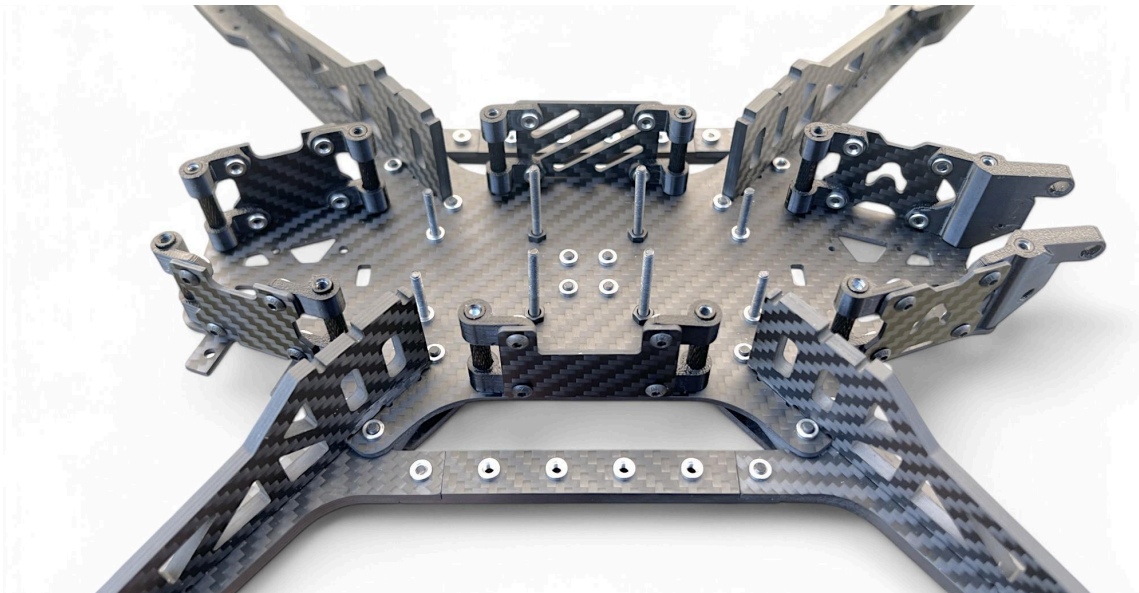
6. Attach 12 x 30mm standoffs to the top plate with 8mm button heads.



7. Attach TPU prints to carbon skirts with 6mm button heads and pressnut. Use an iron to melt the pressnuts into the FPV camera mounts if planning on opening the front skirt to access VTX binding. This ensures pressnuts stay in place when bolts are removed.



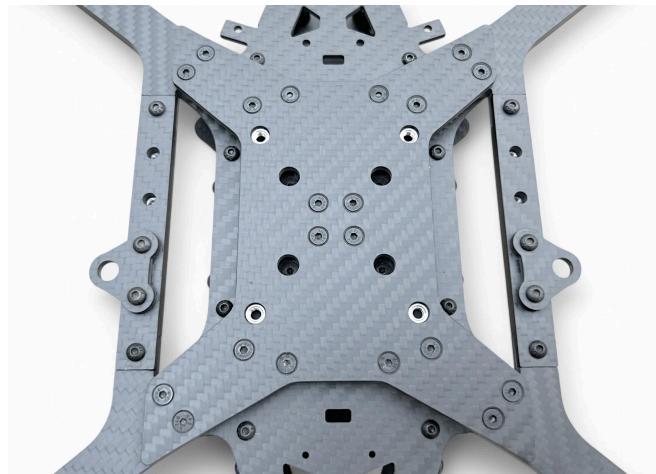
8. Slide on skirts over standoffs



9. If not using strap plates, close up frame with bottom plate and 12 x 8mm button heads.
If using strap plates, attach to frame with 8 x 10mm flathead bolts and nylon nuts.



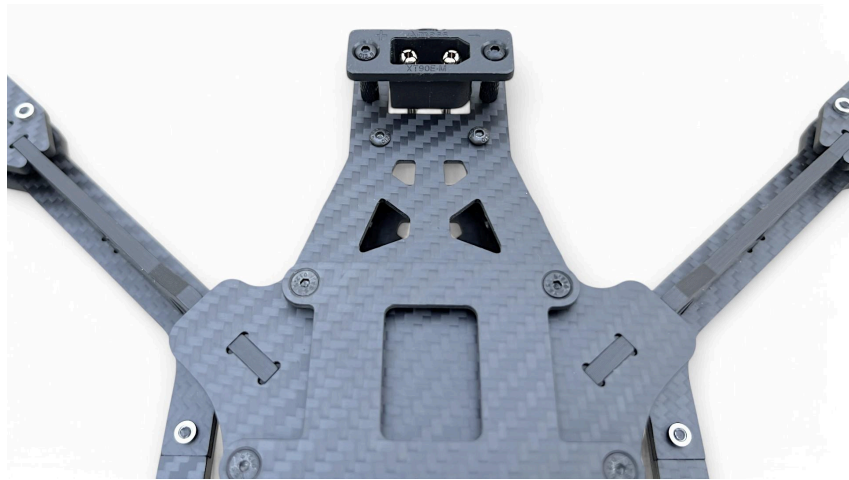
10. Attach SMA and GPS plates to side rails with 10mm button heads



11. Assemble rotating Crossfire mount with 15mm standoff and 2 x 6mm bolts.
Attach to side rails with 10mm bolts and pressnuts.



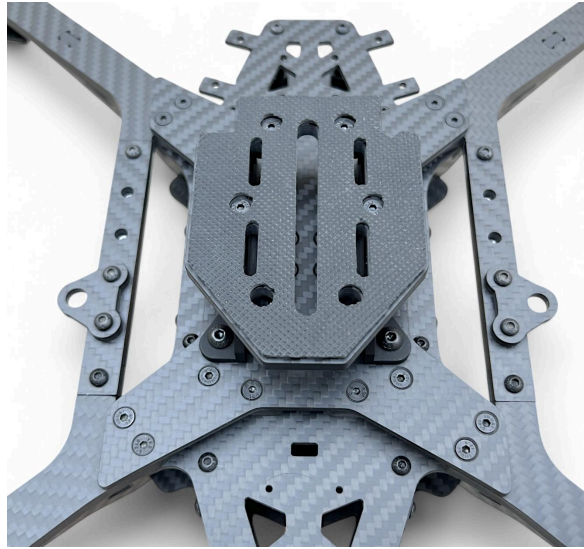
12. Attach XT90 to bottom plate with 15mm standoffs and 4 x 8mm bolts



13. Attach XT60, or XT30 print, to top plate with 8mm bolts and metal nuts

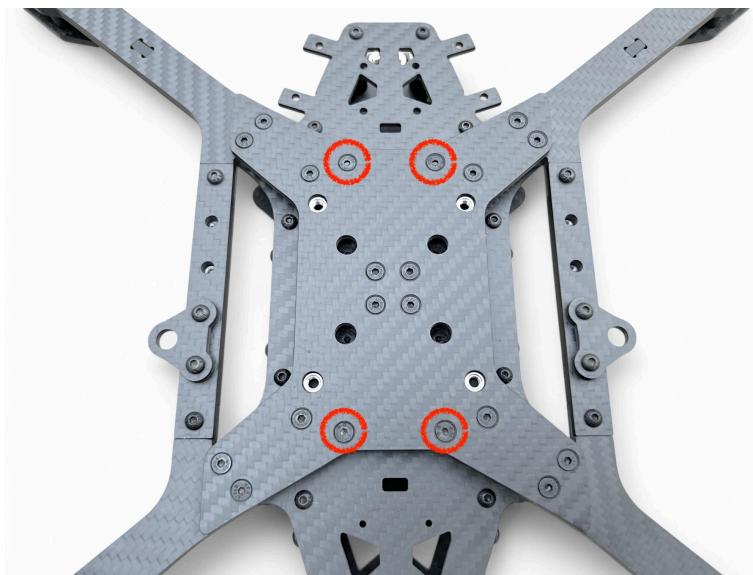


14. Attach cinema camera mount with M4 bolts
([Assembly guide here](#))



MODS

- To run three overlapping stacks, remove 4 x 14mm bolts and replace with longer flatheads.



- To use mounting plate or to mount a naked Blackmagic camera, remove 4 x 14mm bolts and replace with 4 x 25-30mm inverted and add carbon or TPU spacer. Secure with handnut.

